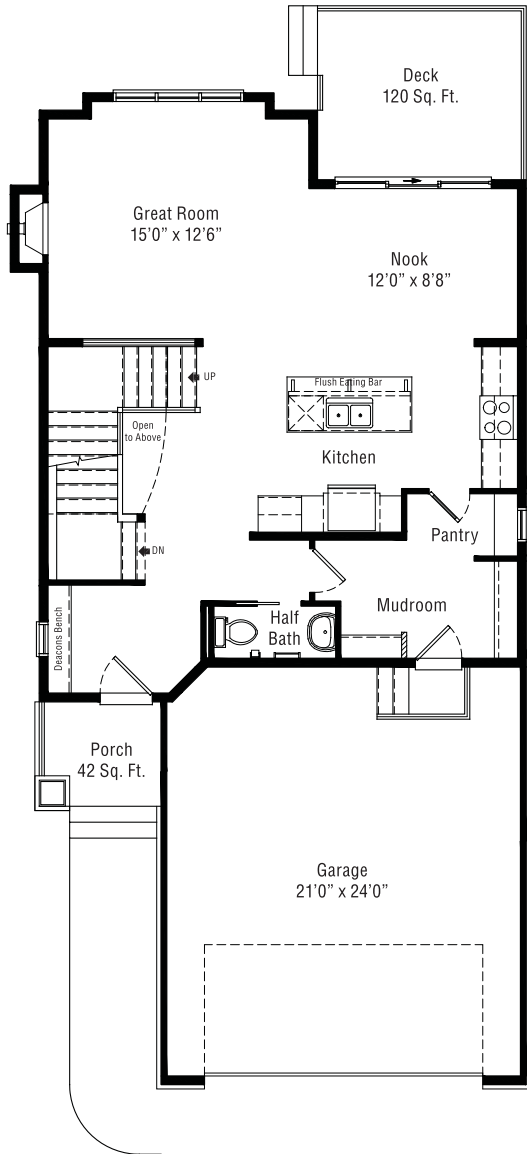
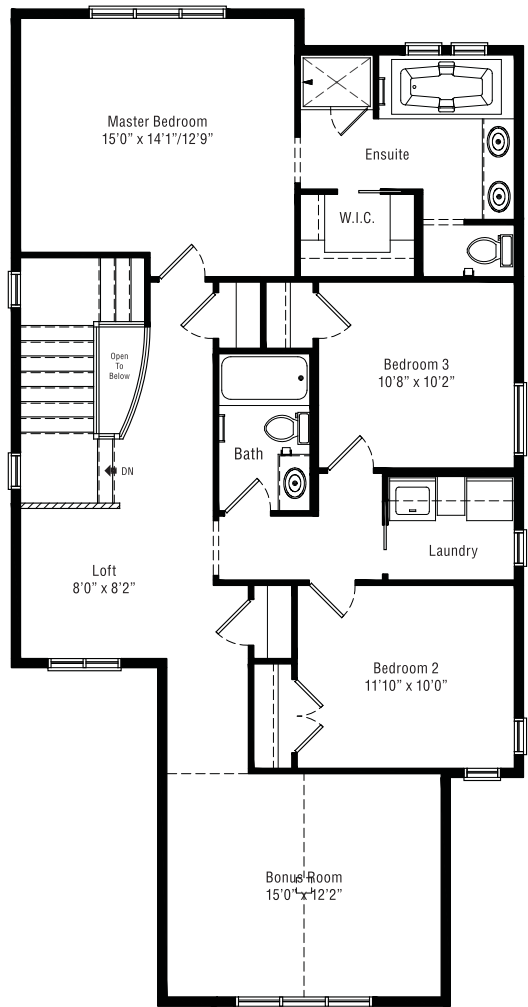


SIENA

Two Storey | 2,177 Sq. Ft. | 3 Bedrooms
 Craftsman Architectural Style in Aspen Hills



Main Floor
 885 Sq. Ft.



Upper Floor
 1,292 Sq. Ft.



This design is published by Albi Homes Ltd., all rights reserved, including the reproduction in whole or in part. Dimensions, square footage and details shown are approximate and may be subject to change without notice. Details may vary by specification and elevation. All images are artist's rendition only.



The Measure of Craftsmanship

LIVE BEAUTIFUL™

CALGARY'S PREMIER BUILDER OF LUXURY HOMES

ALBIHOMES.COM



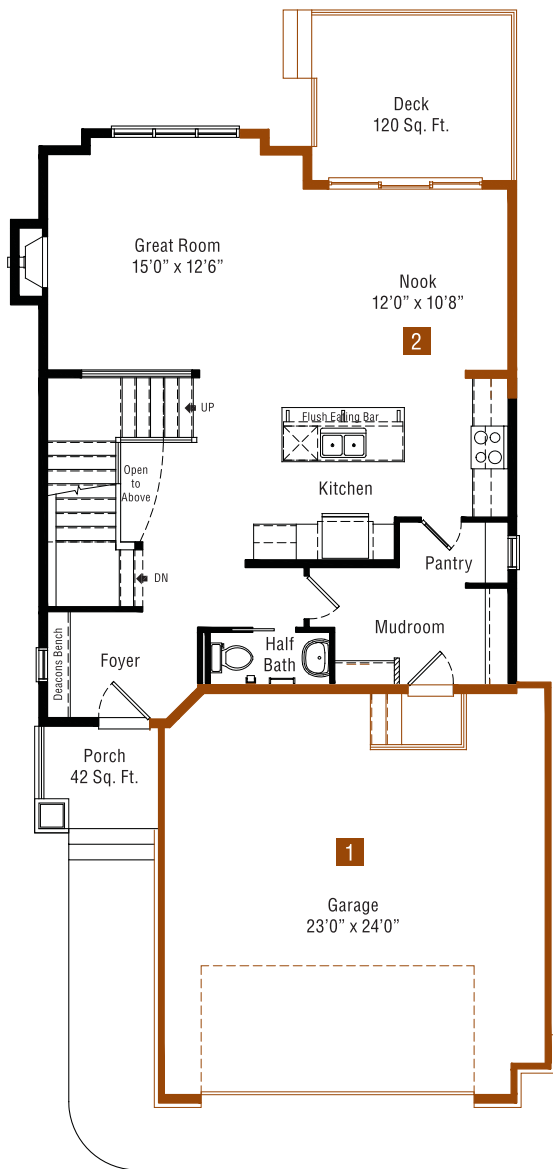
CRAFTSMAN



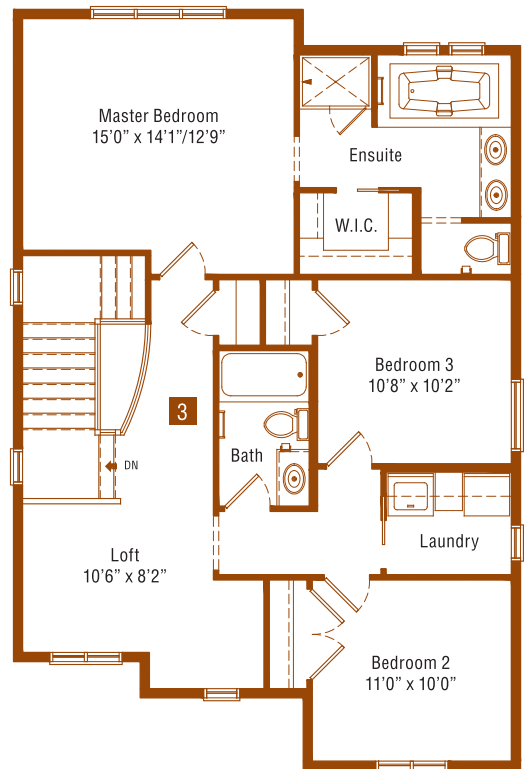
TUDOR

SIENA

Optional Floorplans



Main Floor



Upper Floor

- 1** Main Floor 2' Garage Bump-Out
- 2** Main Floor 2' Nook Extension
- 3** Upper Floor Alternative Layout (removal of Bonus Room)

REV: February 2009

All options for this model may not be displayed. For additional options, please consult with an Albi sales representative.



The Measure of Craftsmanship

LIVE BEAUTIFUL™

CALGARY'S PREMIER BUILDER OF LUXURY HOMES

ALBIHOMES.COM