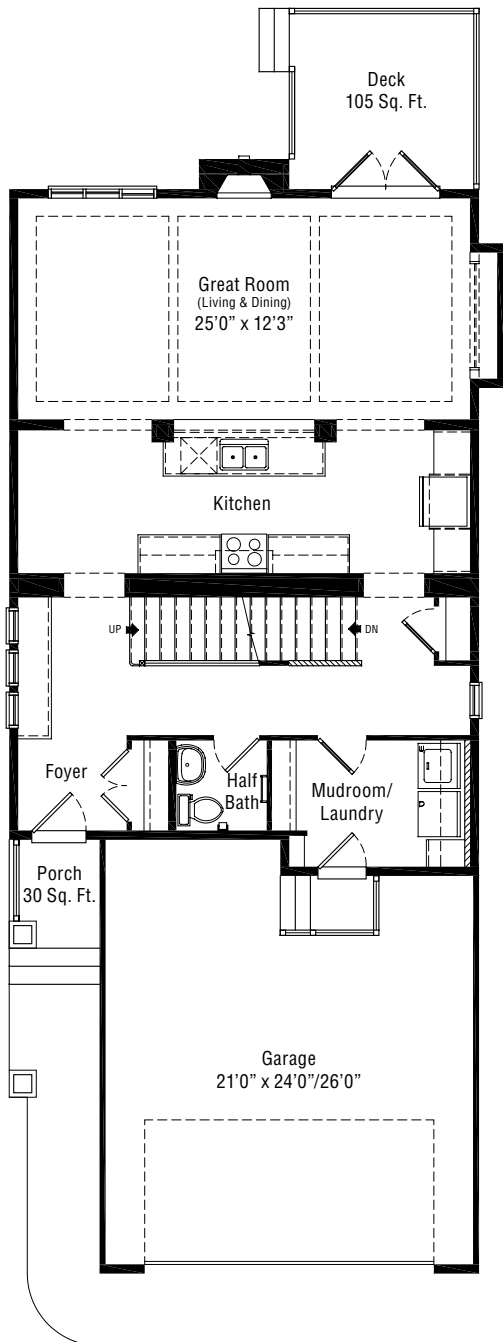
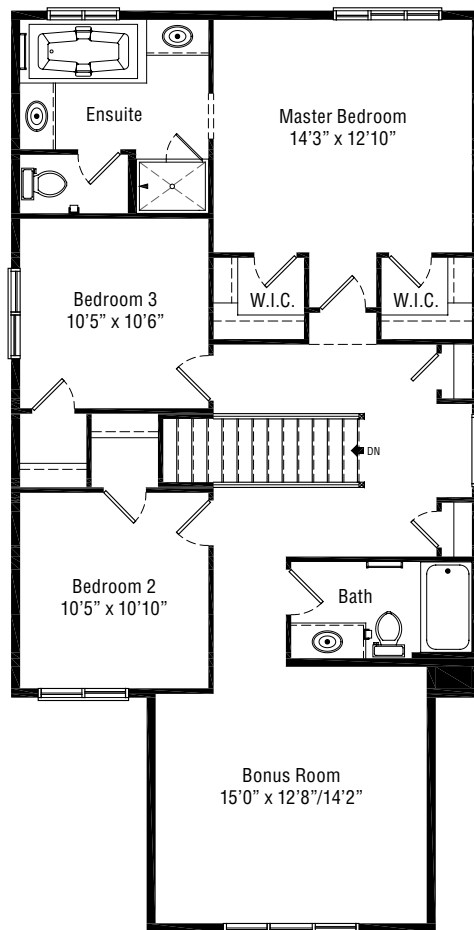


MILANO

Two Storey | 2,175 Sq. Ft. | 3 Bedrooms
Tudor Architectural Style



Main Floor
979 Sq. Ft.



Upper Floor
1,196 Sq. Ft.



This design is published by Albi Homes Ltd., all rights reserved, including the reproduction in whole or in part. Dimensions, square footage and details shown are approximate and may be subject to change without notice. Details may vary by specification and elevation. All images are artist's rendition only.



The Measure of Craftsmanship

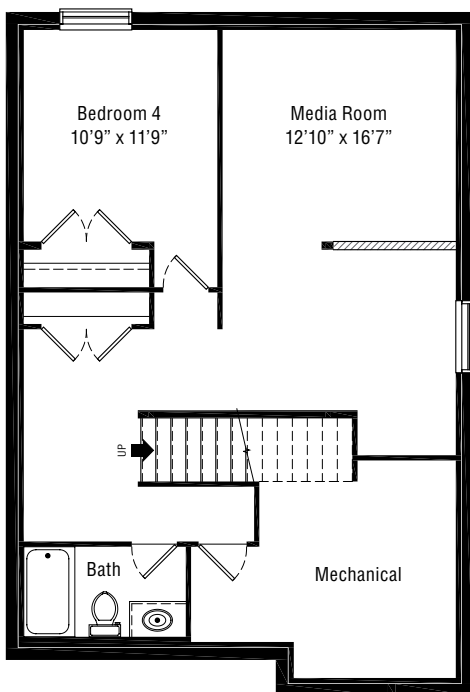
LIVE BEAUTIFUL™

CALGARY'S PREMIER BUILDER OF LUXURY HOMES

ALBIHOMES.COM

MILANO

Lower Level Development | 725 Sq. Ft.
Tudor Architectural Style



Lower Level
725 Sq. Ft.



This design is published by Albi Homes Ltd., all rights reserved, including the reproduction in whole or in part. Dimensions, square footage and details shown are approximate and may be subject to change without notice. Details may vary by specification and elevation. All images are artist's rendition only.



The Measure of Craftsmanship

LIVE BEAUTIFUL™

CALGARY'S PREMIER BUILDER OF LUXURY HOMES

ALBIHOMES.COM