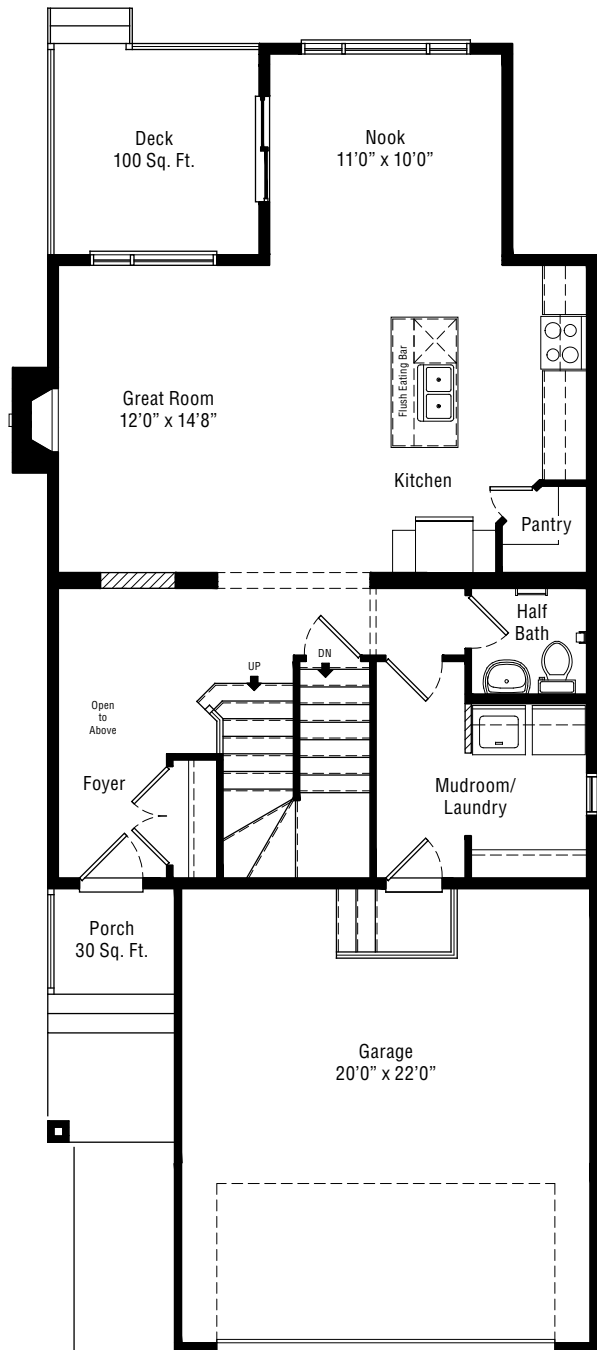


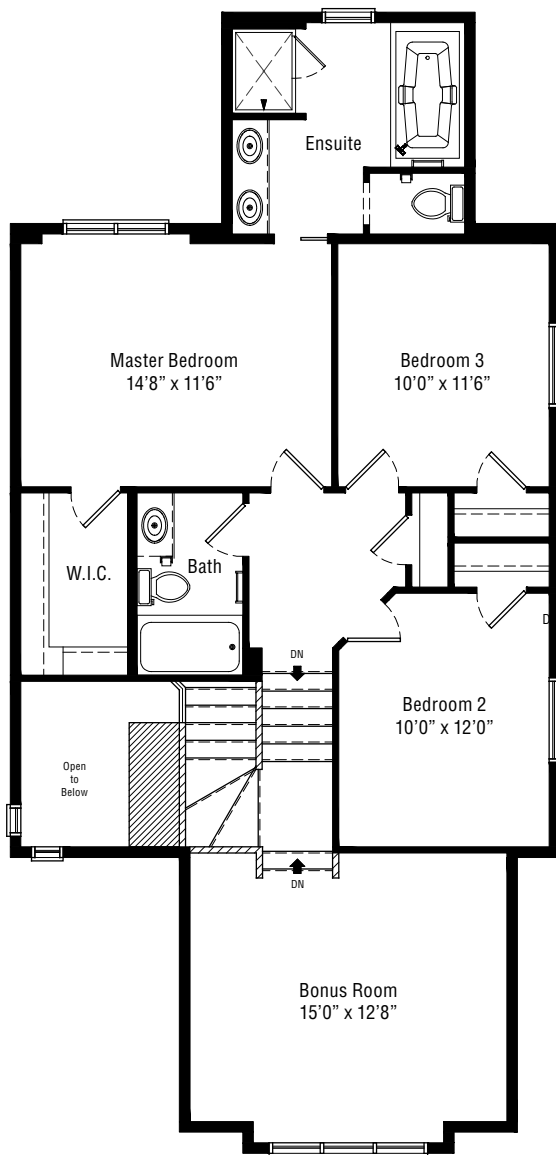
PORTOFINO

Two Storey | 1,982 Sq. Ft. | 3 Bedrooms

Tudor Architectural Style



Main Floor
909 Sq. Ft.



Upper Floor
1,073 Sq. Ft.



This design is published by Albi Homes Ltd., all rights reserved, including the reproduction in whole or in part. Dimensions, square footage and details shown are approximate and may be subject to change without notice. Details may vary by specification and elevation. All images are artist's rendition only.



The Measure of Craftsmanship

LIVE BEAUTIFUL™

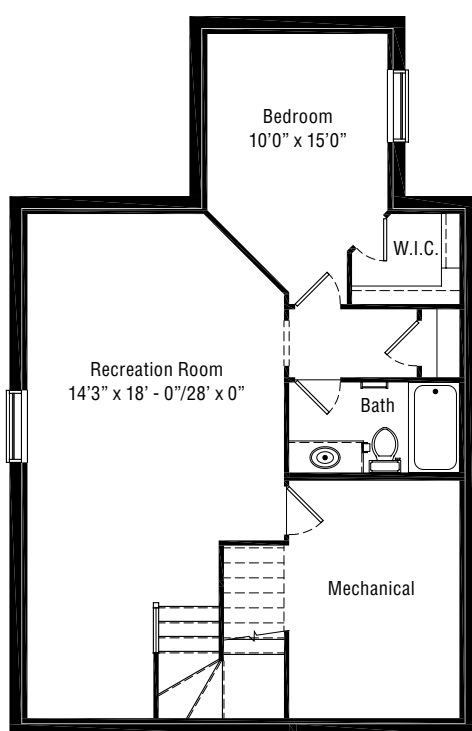
CALGARY'S PREMIER BUILDER OF LUXURY HOMES

ALBIHOMES.COM

PORTOFINO

Lower Level Development | 680 Sq. Ft.

Tudor Architectural Style



Lower Level
680 Sq. Ft.



This design is published by Albi Homes Ltd., all rights reserved, including the reproduction in whole or in part. Dimensions, square footage and details shown are approximate and may be subject to change without notice. Details may vary by specification and elevation. All images are artist's rendition only.



The Measure of Craftsmanship

LIVE BEAUTIFUL™

CALGARY'S PREMIER BUILDER OF LUXURY HOMES

ALBIHOMES.COM



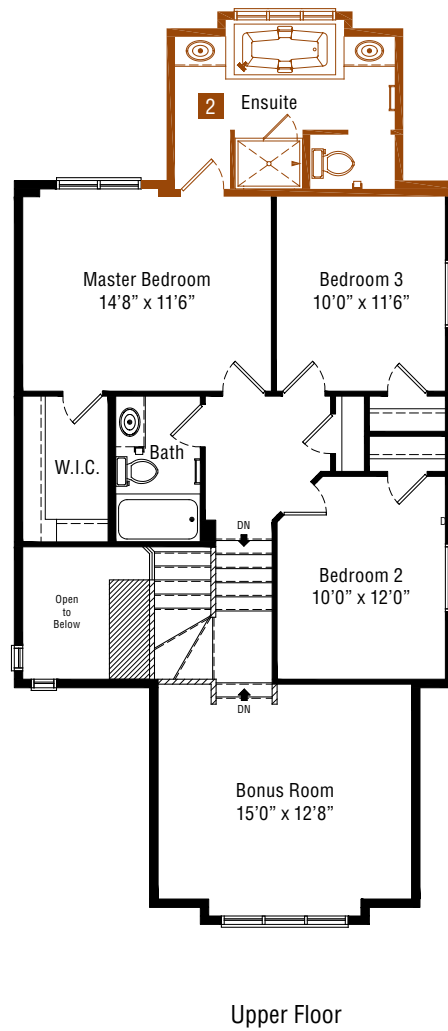
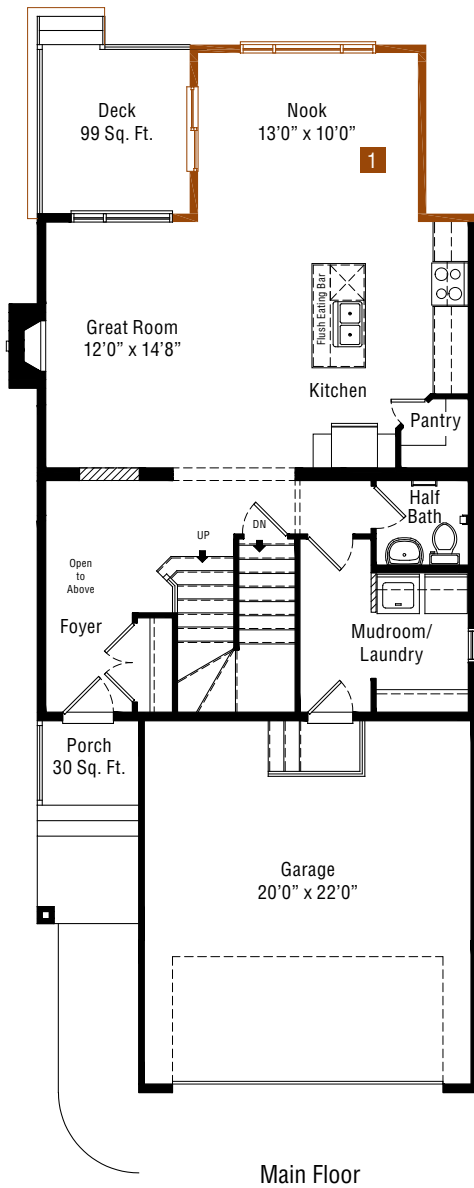
FRENCH COUNTRY



TUDOR

PORTOFINO

Optional Floorplans



- 1** Main Floor 2' Nook Extension
- 2** Upper Floor Alternative Ensuite Layout

All options for this model may not be displayed. For additional options, please consult with an Albi sales representative.



The Measure of Craftsmanship

LIVE BEAUTIFUL™

CALGARY'S PREMIER BUILDER OF LUXURY HOMES

ALBIHOMES.COM