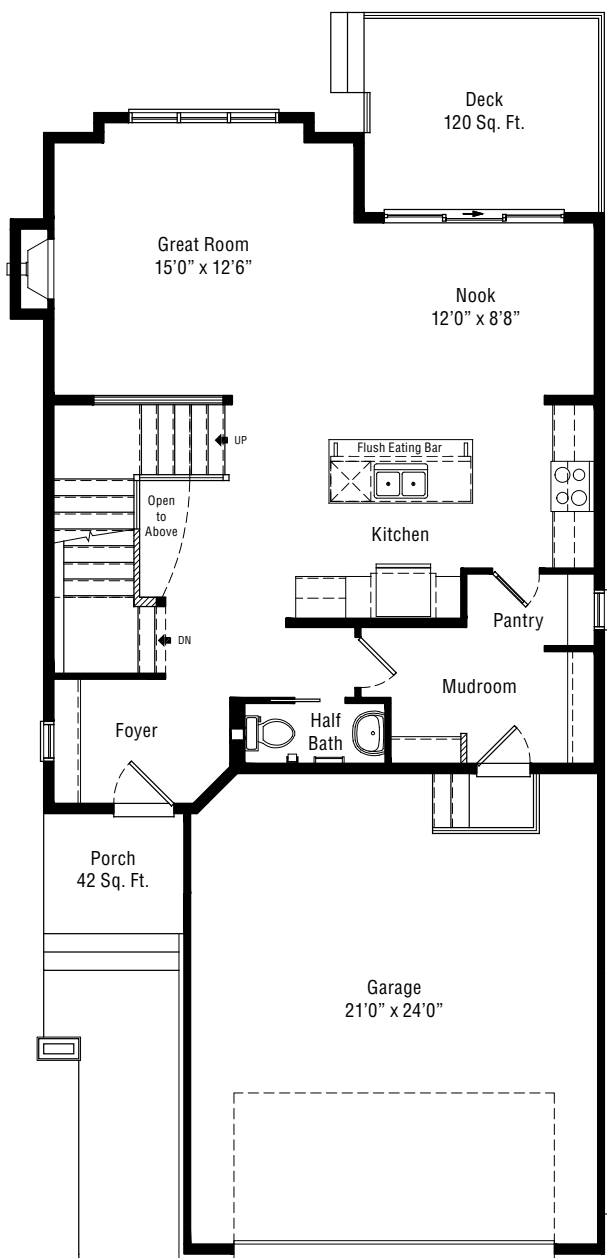


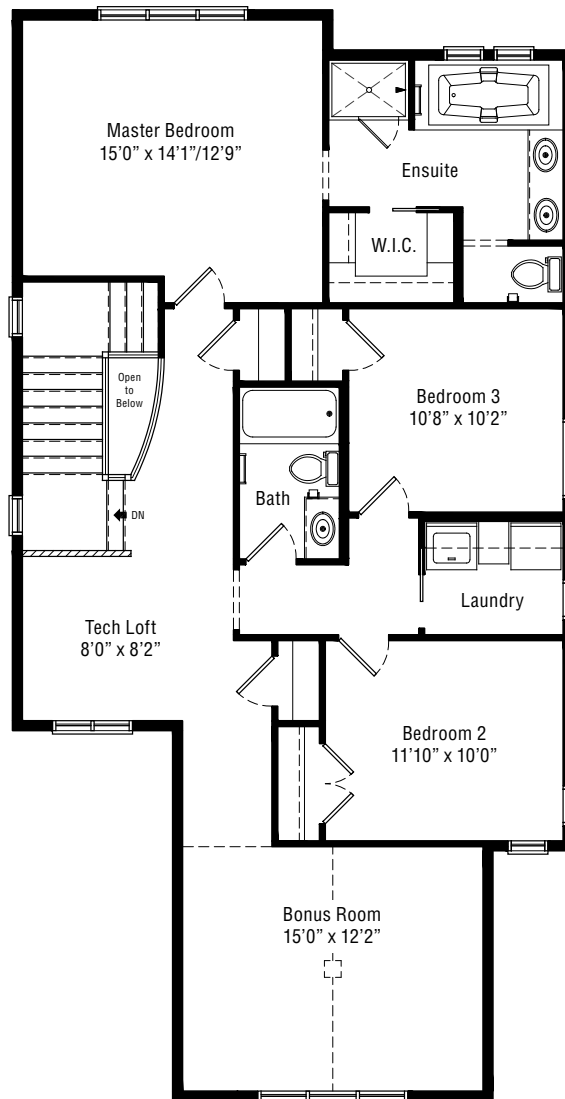
SIENA

Two Storey | 2,177 Sq. Ft. | 3 Bedrooms

French Country Architectural Style



Main Floor
885 Sq. Ft.



Upper Floor
1,292 Sq. Ft.



This design is published by Albi Homes Ltd., all rights reserved, including the reproduction in whole or in part. Dimensions, square footage and details shown are approximate and may be subject to change without notice. Details may vary by specification and elevation. All images are artist's rendition only.



The Measure of Craftsmanship

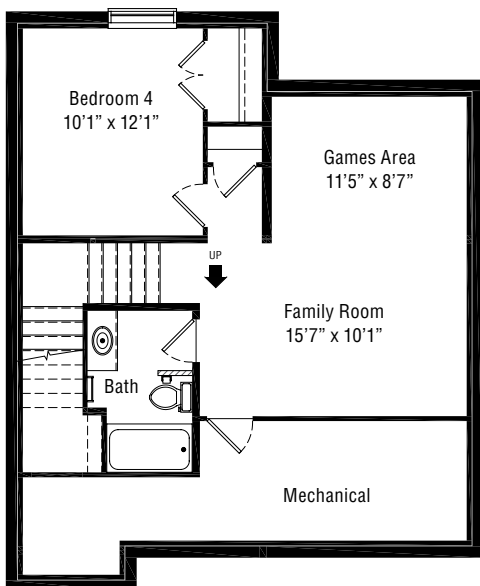
LIVE BEAUTIFUL™

CALGARY'S PREMIER BUILDER OF LUXURY HOMES

ALBIHOMES.COM

SIENA

Lower Level Development | 610 Sq. Ft.
French Country Architectural Style



Lower Level
610 Sq. Ft.



This design is published by Albi Homes Ltd., all rights reserved, including the reproduction in whole or in part. Dimensions, square footage and details shown are approximate and may be subject to change without notice. Details may vary by specification and elevation. All images are artist's rendition only.



The Measure of Craftsmanship

LIVE BEAUTIFUL™

CALGARY'S PREMIER BUILDER OF LUXURY HOMES

ALBIHOMES.COM



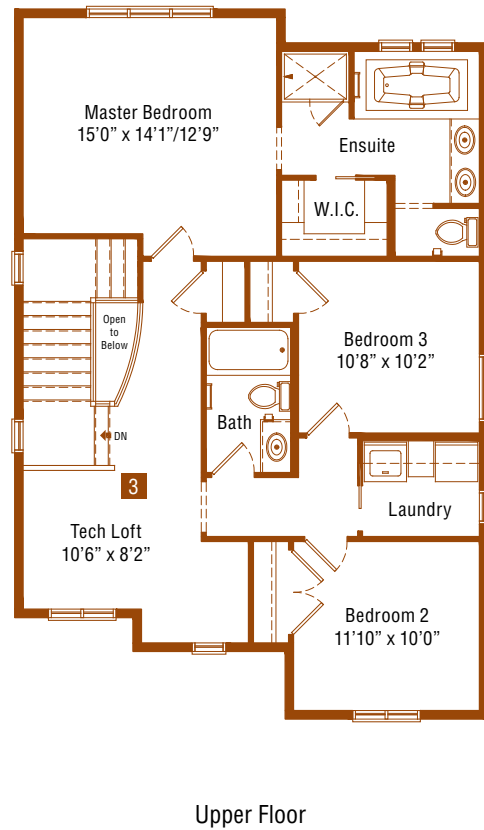
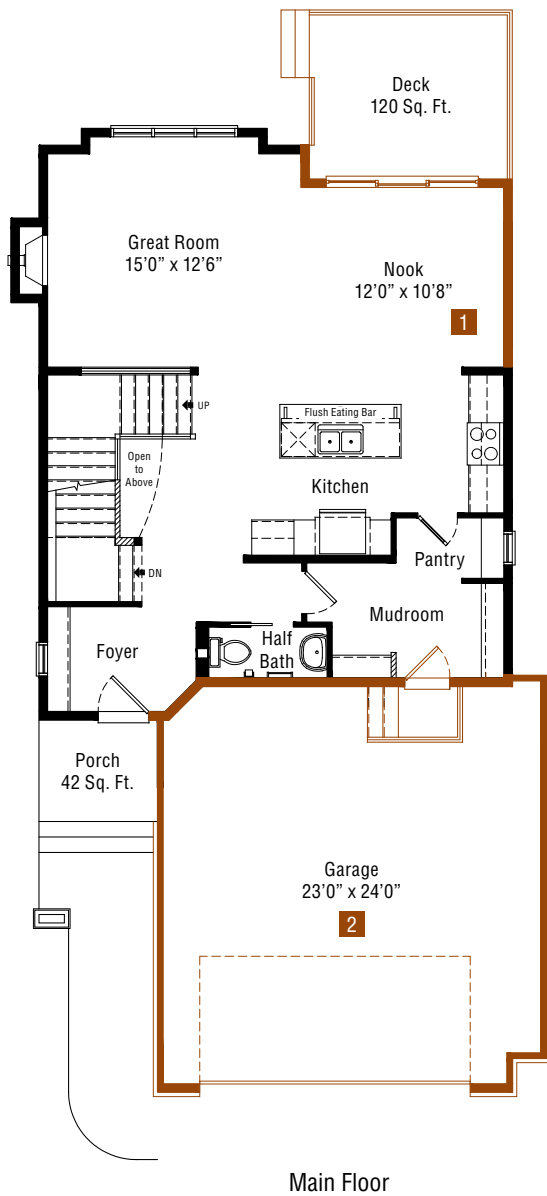
FRENCH COUNTRY



TUDOR

SIENA

Optional Floorplans



- 1 Main Floor 2' Nook Extension
- 2 Main Floor 2' Garage Bump-Out
- 3 Upper Floor Alternative Layout (Removal of Bonus Room)

All options for this model may not be displayed. For additional options, please consult with an Albi sales representative.



The Measure of Craftsmanship

LIVE BEAUTIFUL™

CALGARY'S PREMIER BUILDER OF LUXURY HOMES

ALBIHOMES.COM